

Market Drayton Branch, Stafford Street, TF9 1HX 01630 652 935
Newport Branch, Audley Avenue Industrial Estate, TF10 7BX Tel 01950 820 222

Congratulations on Your New Puppy!

We at Tern Veterinary Group are delighted to meet your new puppy! We have put together this little pack of handy tips to help your newest member of the family settle in.



Consultation times

9:00 am to 10:00 am

2:10 pm to 3:10 pm

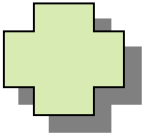
4:30 pm to 6:00 pm

Saturdays

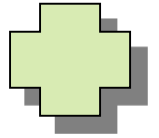
9:00 am - 10:00 am Market Drayton Branch

11:00 am - 12:00 pm Newport Branch

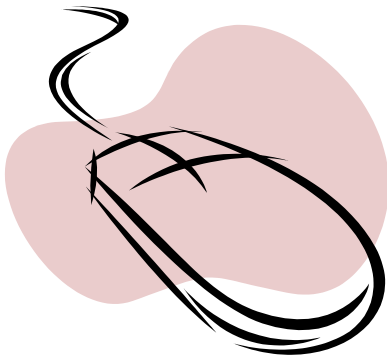
In case of emergency out of hours call 01630 652 935



In case of an emergency please call 01630 652 935



Your call will be forwarded to one of our own small animal vets, so rest assured there will always be a familiar face to advise and help when you need it - 24 hours a day, 365 days a year.



Why not check out our website for more information about us:

www.ternvets.co.uk

Or “like” us on facebook to find out our latest news, help reunite lost pets with their owners and follow interesting pet stories! We would love you to post pictures of your puppy.

The Facebook logo, consisting of the word "facebook" in white lowercase letters on a dark blue rectangular background.

facebook

www.facebook.com/ternvets

Peace of mind....

Microchipping



Microchipping your pet is a permanent method of identification. It involves implanting a small microchip (the size of a grain of rice) under the skin at the back of the neck, a very quick procedure that is very similar to an injection. When this microchip is read by a special reader, the unique number is linked to your details on a database. This is invaluable if your puppy ever goes missing and required if you ever wanted to travel abroad with your pet. By 2016, microchipping will be a legal requirement.

It can be performed during a consultation, puppy party, or other procedure and is priced at only £10

Insurance

Unfortunately, things happen in life when we least expect them - and illnesses or injuries in our pets are no exception. Insuring your pet takes the financial side of the worry away - meaning we can all focus on getting your pet back to health.



We recommend **Petplan** insurance - ask our receptionists about **FOUR WEEKS FREE** cover for new pets. Fill out a form and be covered from today.

www.petplan.co.uk

Household Poisons

Puppies are curious and excitable and whilst this is lots of fun - it also means they are accident prone!! Here are a few ways in which you can avoid harm coming to your pup.

Medicines: Keep all human and veterinary medicines locked away from curious and hungry mouths! Many medicines - including external skin creams or petshop flea products can cause serious harm to your dog if ingested. Never give your dog any human painkillers or other medication without speaking to your vet first.

Food Stuffs: Chocolate is poisonous to your dog - be sure to keep all chocolate products out of reach - especially around Easter and Christmas! Similarly - grapes and raisins, artificial sweeteners and onions can also cause serious health problems so keep them out of harms way and contact your vet if you think your dog has eaten some of these things.

Garage and Shed items: The most common hazards found in the garage or shed are antifreeze products, rodent poisons and slug pellets. All of these surprisingly palatable to dogs and can cause serious - and even fatal - health concerns if ingested. Please avoid using these products where your dog may get access to them but if you suspect ingestion - contact us asap.

Remember - we are available for emergency advice 24 hours a day on 01630 652 935

Puppy Socials



The first few weeks from when you take home your puppy are the most influential weeks of his/her life - so take advantage of this by introducing them to as many new things as possible! After about 14 weeks, puppies are much less accepting of unfamiliar objects and environments and this can cause a fearful and ultimately aggressive response to them later in life.

Socialise your puppy with other people, noises, children, and (once they are vaccinated) - friendly dogs to get them used to communicating and interacting with new friends and in new situations! Make sure to be gradual and gentle though - you don't want to teach your pup to be afraid of something rather than accept it!



Why not join us at a free puppy party to kick start your puppy's social life?! Meet our canine behaviourist **Helen Rowley** to discuss puppy training. Our vets and nurses will be on hand to give specific advice about worming or neutering and answer any questions you might have!

Worming

Yuck!!

Worms in your puppy are not nice to think about but controlling worms is simple to do and is very important for both your puppies and your family's health.

Did you know?

Some adult female worms can produce up to 80, 000 eggs....in a single day!

There are a few types of intestinal worms seen in dogs.



Roundworms

Ascarids, Whipworms and Hookworms



Did you know?

Puppies are usually born infected with roundworms - or infected via their mothers milk

Tapeworms

Did you know?

Dogs are most commonly infected by tapeworms by ingesting fleas (an intermediate host) while grooming. Flea control is important too!



WORMING CONTROL

There are many products available these days to worm your pets - but they vary in how they are given, how effective they are and in how long they last. Please speak to your vet about the most effective and suitable program for your pup. Here are some of the products our vets recommend for puppies:

Panacur

Cazital

Drontal

Milbemax

Regular worming of your pet is important for you too, worm eggs can be passed to the human members of the family by your puppy licking your hands and face after grooming, or even brought into your house on your shoes from the soil. Health risks are rare, but present.

Another type of worm to be aware of is **Lungworm** (*Angiostrongylus vasorum*)




Lungworm is spread by ingesting infected slugs and snails. Sometimes this happens by accident - when dogs are chewing toys or rummaging through the undergrowth.

Lungworm used to be rare in the UK but the numbers of confirmed cases are rising. It can cause severe breathing and bleeding problems in your dog if left untreated.

It can be prevented by using a product available from vets called **ADVOCATE®**. This is a “spot on” applied product which is effective for a month and will also treat for roundworms, fleas and mites.

Worming Schedule

Puppies should be wormed monthly until they are 6 months old, and then every 3 months thereafter. Use this table to keep up to date with treatments!

AGE	DATE	PRODUCT	

Vaccinations

Many of the infectious diseases we vaccinate against used to kill thousands of pets every year. As long as your puppy's mother was immune, your puppy was protected against disease for the first few weeks of their lives by the immunity passed in the mother's first milk. However, this immunity fades quickly, leaving your pup susceptible.

Your pup will receive a primary vaccination course at Tern Vets, this consists of 2 vaccinations, one at 8 weeks old and the other 2-4 weeks later. This will make sure your puppy is not left unprotected against:

PARVO VIRUS

LEPTOSPIROSIS

DISTEMPER

INFECTIOUS CANINE HEPATITIS

PARAINFLUENZA

What about **Kennel Cough?**

(aka Canine infectious tracheobronchitis)

This is a highly contagious multifactorial disease of a dog's respiratory tract. It causes a harsh cough and is spread very quickly between animals. If you think your puppy may be mixing with lots of other dogs and at risk at times in their lives e.g. time in kennels or dog training classes, then ask your vet about vaccination.

New Puppy Vet Check List

So you have got a new puppy! Here is a quick check list to make sure you are all set for your new family member. Have you asked your vet about all these things?

Puppy Pack



First Vet Health Check

Vaccinations

Neutering

Worming

Flea and Mite Control

Socialisation and Training - Puppy Party!

Insurance

Tern Vets Pet Care Plan